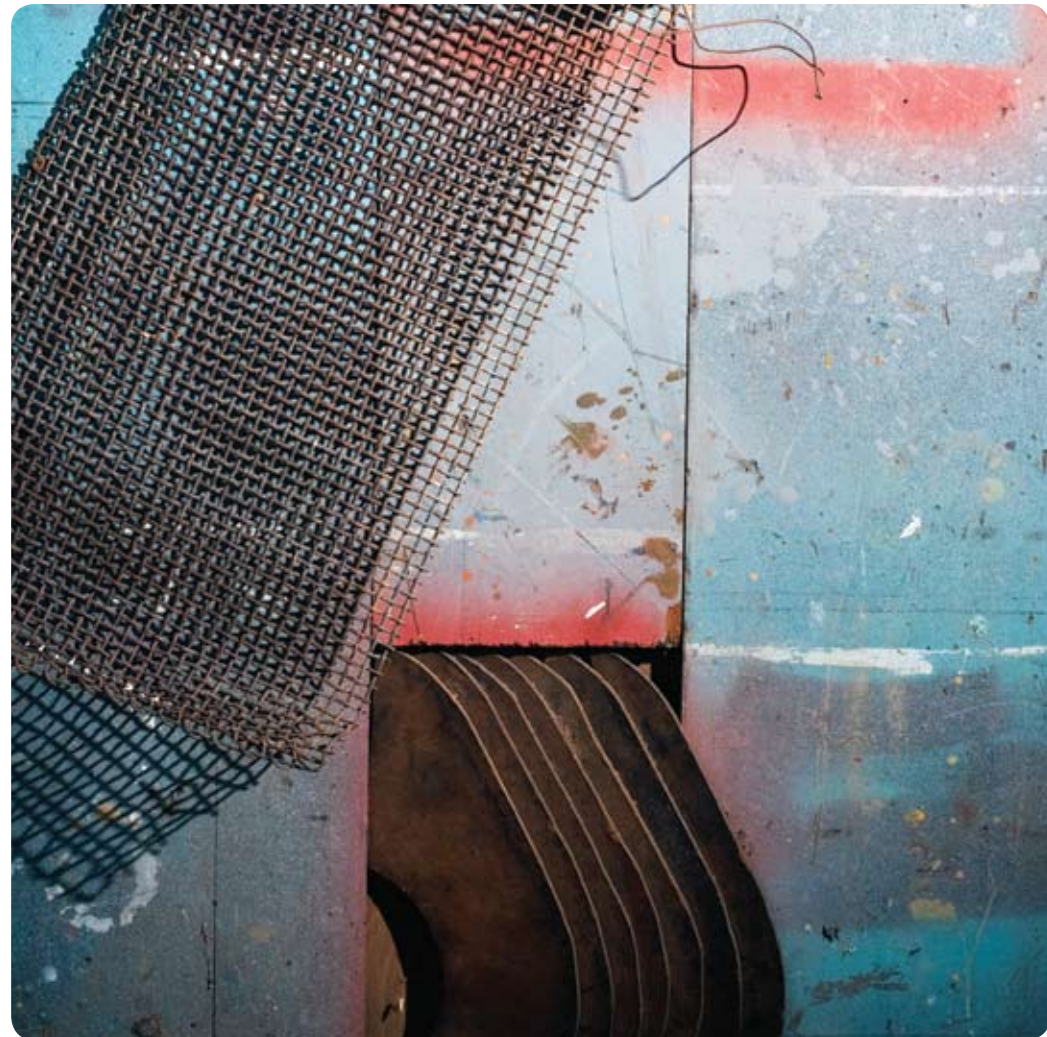




Alison Coates *Inland Clouds (Detail)* 2010 129cm x 50cm Sheep & cattle bones, slates & wire



Alison Coates *Open Water (Detail)* 2010 74cm x 140cm Wood, wire, ply & metal



NG ART  
GALLERY

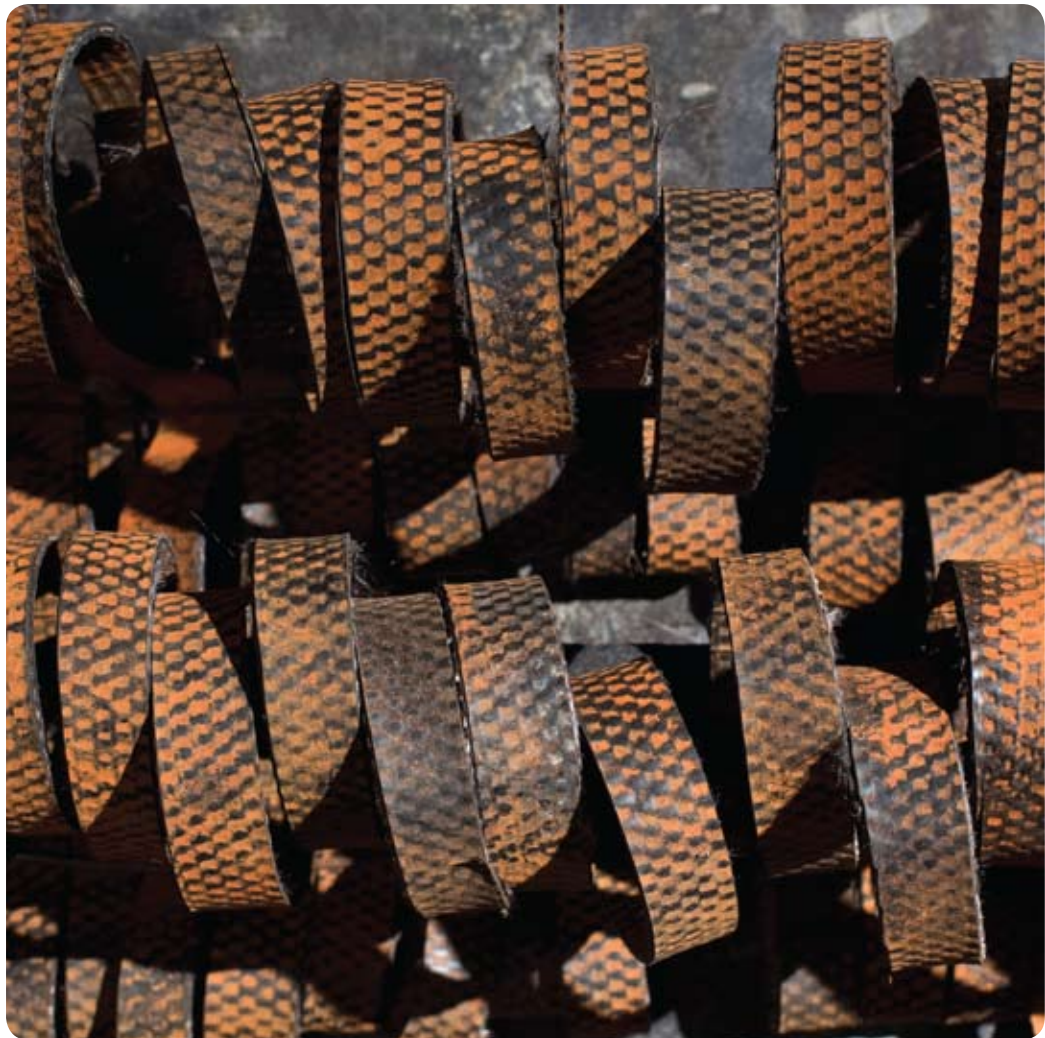
member of  
**acga** australian  
contemporary  
gallery association



**Dandelion Vineyards**  
australian wine & spirits

**mission**  
RESTAURANT & BAR

three little queen street chippendale nsw 2008 tel 9318 2992 ng@ngart.com.au www.ngart.com.au  
ng art gallery tue – sat 11am – 10pm mission tue – fri 11am – 10pm sat 9am – 10pm



Alison Coates Sea Bed (Detail)/ 2010 133cm x 43cm Rubber, form board & wire

NG Art Gallery

Warmly invites you to the opening of

# Alison Coates

## Crossing the Reef

To be opened by Editor of Artist Profile Magazine, Owen Craven

**Tuesday 3rd May**  
**6pm – 8pm**

Exhibition 3 – 21 May 2011